

RENEGADE WARRANTY

RENEGADE MY2024 MOTORHOMES ARE COVERED BY A 1-YEAR UNLIMITED MILES LIMITED WARRANTY, PLUS A 3-YEAR 36,000-MILE LIMITED STRUCTURAL WARRANTY.

ALL RENEGADE MOTORHOME CHASSIS, ENGINES, TRANSMISSIONS, AND DRIVETRAIN WARRANTIES ARE PROVIDED AND ADMINISTERED BY THEIR RESPECTIVE MANUFACTURERS.

FOR SPECIFIC INFORMATION ABOUT THESE WARRANTIES, ASK YOUR DEALER OR CONTACT RENEGADE RV.



VERONA 2024



Renegade
RV

52216 SR15 BRISTOL, IN 46507
574.848.1126 | RENEGADERV.COM

Renegade
RV

VERONA

THE VERONA COMBINES TRAVEL FRIENDLY PERFORMANCE AND LUXURY INTO EVERY DETAIL. BEAUTIFUL HARDWOOD CABINETS, POLISHED SOLID SURFACE COUNTERTOPS, STAINLESS STEEL APPLIANCES, AND ULTRA SOFT FURNITURE ARE JUST A FEW OF THE FEATURES THROUGHOUT THE VERONA. WITH AMPLE INTERIOR AND EXTERIOR STORAGE, AS WELL AS COMFORTABLE INTERIORS, THE VERONA MAKES TRAVELING THE ROAD A BREEZE.

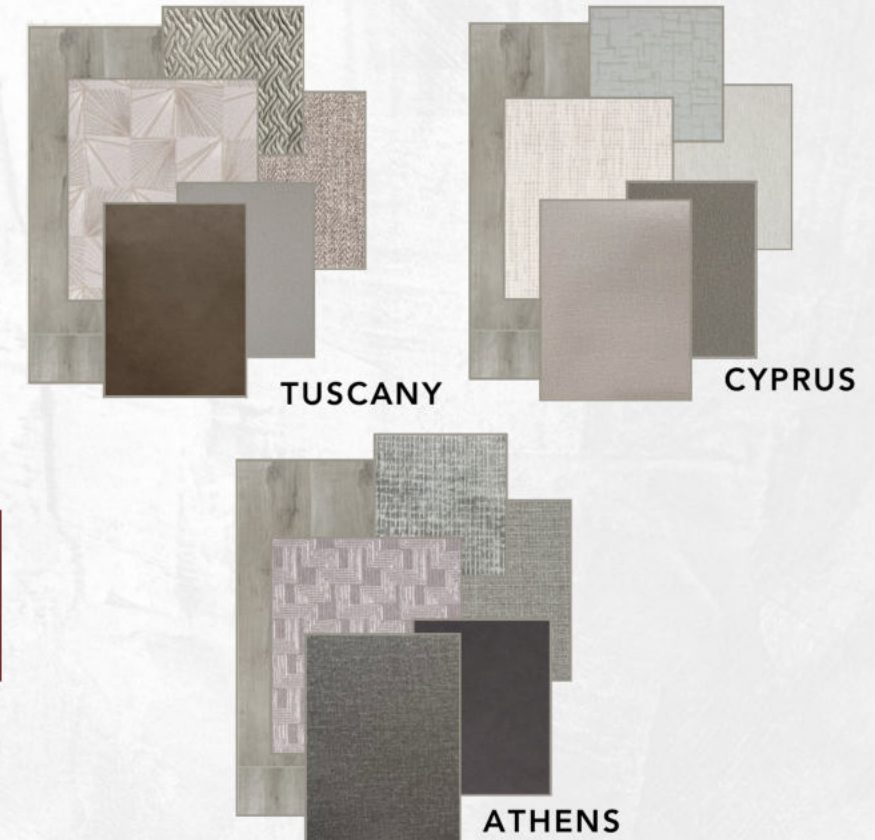


INTERIOR DECORS

CABINETS



LAKWOOD CAPE COD



Featured here is the Verona 40VRB in our Tuscany decor with Cape Cod cabinetry.



AT A GLANCE

EXTERIOR HEIGHT	12'10"
EXTERIOR WIDTH	99 1/4"
EXTERIOR LENGTH	36'11" - 40' 2"
INTERIOR HEIGHT	84"
INTERIOR WIDTH	95 1/2"

FUEL CAPACITY	100 GALLONS
DEF CAPACITY	6 GALLONS
FRESH WATER CAPACITY	150 GALLONS
GREY WATER CAPACITY	75 GALLONS
BLACK WATER CAPACITY	75 GALLONS

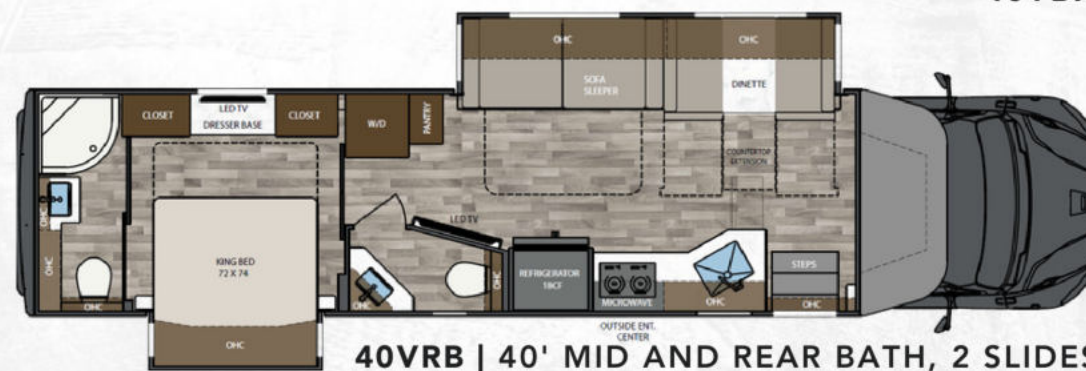
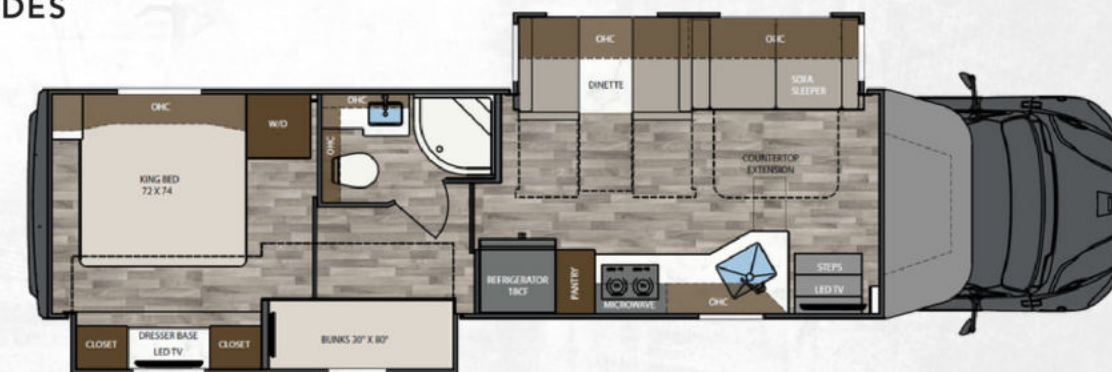
KEY FEATURES

- 360HP W/ALLISON® 3200TRV TRANSMISSION
- 250D AQUAHOT® HYDRONIC HEATING
- MULTIPLEX SYSTEM WITH COLOR TOUCH PANEL & BLUETOOTH APP CONTROL
- ALL ELECTRIC COACH W/SINGLE 3,000W PURE SINE WAVE INVERTER
- 6 PAINT COLOR OPTIONS
- FOUR-POINT AUTOMATIC HYDRAULIC LEVELING SYSTEM
- ELECTRIC LATERAL ARM AWNING WITH INTEGRATED LED LIGHTS
- SOLID HARDWOOD CABINETS AND SOLID SURFACE COUNTERTOPS

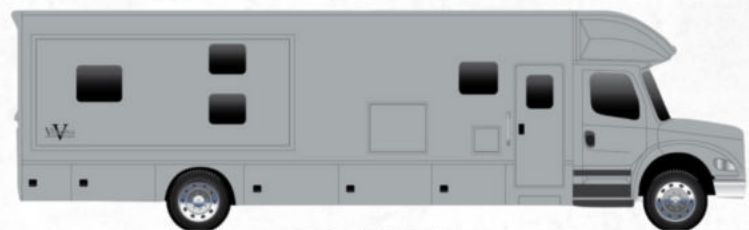


VERONA

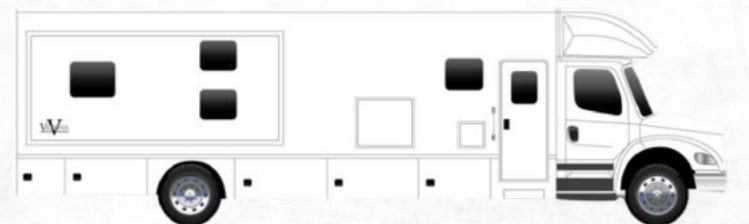
FLOORPLANS



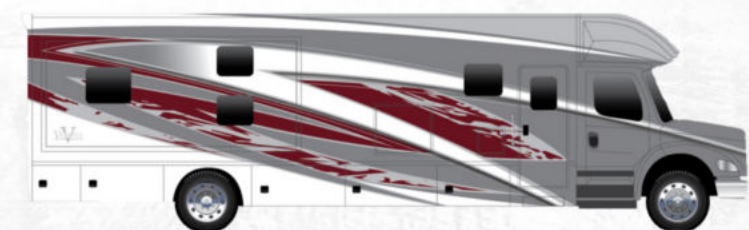
PAINT OPTIONS



POLARIS



TUNDRA



FLARE



KINETIC



SURGE



PROPULSION

VERONA

STANDARDS AND OPTIONS

CAB/CHASSIS

- FREIGHTLINER® M2-106
- CUMMINS® L9 ENGINE WITH 360HP, 1,150 LB. FT. TORQUE
- 34,300 LBS. GVWR
- ALLISON® 3200TRV ELECTRONIC 6-SPEED TRANSMISSION
- 20,000 LB. TOWING CAPACITY
- DUAL 50-GALLON ALUMINUM FUEL TANKS (100-GALLON TOTAL CAPACITY)
- 6 GALLON DEF TANK
- POLISHED ALUMINUM WHEELS WITH CENTER CAPS
- AIRLINER® REAR AIR SUSPENSION
- GARMIN® TOUCH SCREEN, BLUETOOTH, GPS, RV MAPS AND COLOR CAMERA MONITOR
- REAR AND SIDE VIEW CAMERAS
- PREMIUM FREIGHTLINER® SOUND AND THERMAL INSULATION PACKAGE
- LED HEADLIGHT ASSEMBLIES
- POWER WINDOWS AND DOOR LOCKS
- POWER/HEATED REMOTE CONTROL MIRRORS
- AIR RIDE DRIVER AND PASSENGER SEAT PEDESTALS WITH SWIVELS
- SOFT TOUCH DRIVER/PASSENGER SEATS WITH ARMRESTS
- AUXILIARY AIR CHUCK AND HOSE
- FREIGHTLINER® SAFETY ASSURANCE PACKAGE:
 - ENHANCED CRUISE CONTROL
 - LANE GUIDANCE
 - ELECTRONIC STABILITY CONTROL
 - COLLISION MITIGATION

EXTERIOR

- AERODYNAMIC FIBERGLASS FRONT AND REAR CAPS, TRANSITION, AND CAB STEPS
- FOUR-POINT HYDRAULIC LEVELING SYSTEM WITH APP
- EXTERIOR ENTRY DOOR ASSIST HANDLE
- POWERED FOLDING DOUBLE ENTRY STEPS
- (6) COLORWAY PAINT OPTIONS
- GIRARD® GG LATERAL ARM ELECTRIC AWNING WITH LED LIGHTS
- SLIDE TOPPERS
- FRAMELESS DUAL-PANE TINTED WINDOWS WITH SCREENS
- SIDE-SWING ALUMINUM COMPARTMENT DOORS WITH SINGLE HANDLE PADDLE LATCHES AND DOUBLE CATCH
- STEEL STORAGE COMPARTMENTS WITH CARPETED LINING
- DIAMOND SHIELD® NANO-FUSION™ PAINT PROTECTION (FRONT MASK)
- UNDERCOATING

CONSTRUCTION

- 2" VACUUM BOND LAMINATED SIDEWALLS WITH WELDED ALUMINUM FRAMING
- WELDED ALUMINUM ROOF TRUSS SYSTEM WITH FRAMED CUTOUTS
- ONE-PIECE CROWNED FIBERGLASS ROOF SURFACE
- "SUPER SANDWICH" FLOOR CONSTRUCTION WITH COMPOSITE UNDERBELLY INCLUDES:
 - 2" WELDED STEEL FLOOR JOIST SYSTEM MOUNTED TO 3" STEEL LONGITUDINAL FLOOR BEAMS
 - 3/4" FIR PLYWOOD DECK OVER 2 X 4 WOOD-FRAMED RESIDENTIAL FLOOR WITH THERMAL AND SOUND DEADENING INSULATION

INTERIOR

- (3) INTERIOR DECOR OPTIONS
- DÉCOR COORDINATING FABRIC VALANCES
- DOUBLE ROLLER DAY/NIGHT SHADES (MANUAL)
- DECORATIVE WALLBOARD WITH COORDINATING ACCENT IN SLIDEOUTS
- HIGH-GRADE LVP FLOORING THROUGHOUT
- MAPLE HARDWOOD CABINETRY
- 2-WOOD STAIN COLOR OPTIONS
- DRAWERS ON SOFT CLOSING SLIDES
- FRAMED DOORS ON HIDDEN HINGES
- PANTRY
- HARDWOOD SLIDE FASCIA
- SATIN NICKEL DOOR HARDWARE
- SATIN NICKEL KITCHEN FAUCET
- SOLID SURFACE COUNTERTOPS THROUGHOUT
- RECTANGULAR STAINLESS STEEL SINGLE BOWL UNDERMOUNT KITCHEN SINK WITH COVER
- GROUTED TILE BACKSPLASH
- SLIDING BUTCHER BLOCK COUNTERTOP EXTENSION
- LED LIGHTING
- MEMORY FOAM MATTRESS
- ULTRA SOFT TOUCH VINYL FURNITURE UPHOLSTERY
- CONVERTIBLE BOOTH DINETTE WITH STORAGE
- SOFA SLEEPER, TRI-FOLD
- AEROCAP WITH STORAGE CABINET

APPLIANCES

- 18 CU. FT. FRENCH DOOR RESIDENTIAL STAINLESS STEEL REFRIGERATOR WITH ICEMAKER
- RECESSED 2-BURNER ELECTRIC INDUCTION COOKTOP WITH POLISHED SOLID SURFACE COVERS
- 1.7 CU. FT. STAINLESS STEEL CONVECTION MICROWAVE OVEN
- AQUA-HOT® 250D HYDRONIC WATER AND ZONE HEATING SYSTEM
- (2) 15,000 BTU ROOF A/C WITH HEAT PUMPS AND PLUMBED CONDENSATION LINES
- DUCTED AIR CONDITIONING
- MAXXAIR® POWER VENTS
- PRE-WIRED AND PLUMBED FOR OPTIONAL WASHER/DRYER
- CARBON MONOXIDE, LP AND SMOKE DETECTORS, AND FIRE EXTINGUISHER

ENTERTAINMENT SYSTEM

- 43" 4K SMART LED TV IN LIVING AREA, MOUNTED ON ARTICULATING SWING ARM
- SOUNDBAR HOME THEATER WITH BLUETOOTH STREAMING AND WIRELESS SUBWOOFER IN LIVING AREA
- 32" 4K SMART LED TV IN THE BEDROOM
- EXTERIOR ENTERTAINMENT CENTER:
 - 32" SMART LED TV ON SWIVEL
 - SOUNDBAR WITH BLUETOOTH STREAMING
 - USB CHARGING
- WINEGARD® CONNECT 2.0 ROOFTOP OTA ANTENNA WITH WIFI AND 4G READY (SIM CARD REQ.)
- WINEGARD® IN-MOTION SATELLITE SYSTEM
- PREWIRE FOR WINEGARD® TRAV'LER STATIONARY HD SATELLITE SYSTEM

BATH

- MAPLE HARDWOOD VANITY, MEDICINE AND LINEN STORAGE CABINETS
- LED VANITY LIGHT
- DELUXE SATIN NICKEL BATH FAUCET AND ADJUSTABLE SHOWER HEAD
- SATIN NICKEL TOWEL BAR, TOWEL RING, AND TP HOLDER
- PORCELAIN MACERATOR TOILET WITH PUSH BUTTON FLUSH
- SOLID SURFACE COUNTERTOP WITH INTEGRATED SINK
- WAVY PATTERNED FIBERGLASS SHOWER WITH GLASS DOOR
- SKYLIGHT OVER SHOWER

ELECTRICAL SYSTEMS

- 8KW ONAN® QUIET DIESEL GENERATOR
- AUTOMATIC GENERATOR START SYSTEM
- 50-AMP ELECTRICAL PANEL
- 3,000W TRUE SINE WAVE INVERTER
- TRANSFER SWITCH WITH SURGE PROTECTION
- (1) 330AH AGM HOUSE BATTERY
- SOLAR CHARGING SYSTEM PRE-WIRE
- MULTIPLEX CONTROL SYSTEM WITH BLUETOOTH APP CONTROL
- USB/USB-C CHARGING IN LIVING AREA, BEDROOM, KITCHEN AND BUNK AREAS
- 50-AMP POWER RETRACTABLE SHORE CORD REEL
- 12V HOLDING TANK HEATERS, GREY AND BLACK TANKS

PLUMBING

- 150 GALLON FRESH WATER TANK
- 75 GALLON GREY TANK
- 75 GALLON BLACK TANK
- SEE-LEVEL® TANK MONITORING SYSTEM
- FULL MAINTENANCE WET BAY
 - BLACK TANK FLUSH SYSTEM
 - CITY WATER HOOKUP WITH POWERED RETRACTABLE HOSE REEL
 - OUTSIDE FAUCET WITH SPRAYER
- ON DEMAND WATER PUMP
- WHOLE HOUSE WATER FILTRATION SYSTEM

POPULAR OPTIONS

- RECLINING THEATRE SEAT ILO STANDARD SOFA
- (2) 19" MONITORS WITH DVD IN BUNK SLIDE (40VBH ONLY)
- CABOVER BUNK WITH WINDOW, POWER SHADE, AND 24" SMART LED TV
- WINEGARD® HD SATELLITE TRAVELR PRO
- 600W SOLAR PANEL SYSTEM (3 @ 200W)
- (3) 100AH LITHIUM BATTERIES ILO AGM BATTERIES
- AMERICAN RACING WHEELS® UPGRADE (BLACK)
- CALIBER 9® GRILLE PACKAGE (AVAIL. IN CHROME OR BLACK)
- FULL-WIDTH ROCK GUARD MUDFLAP
- WASHER AND DRYER STACK